

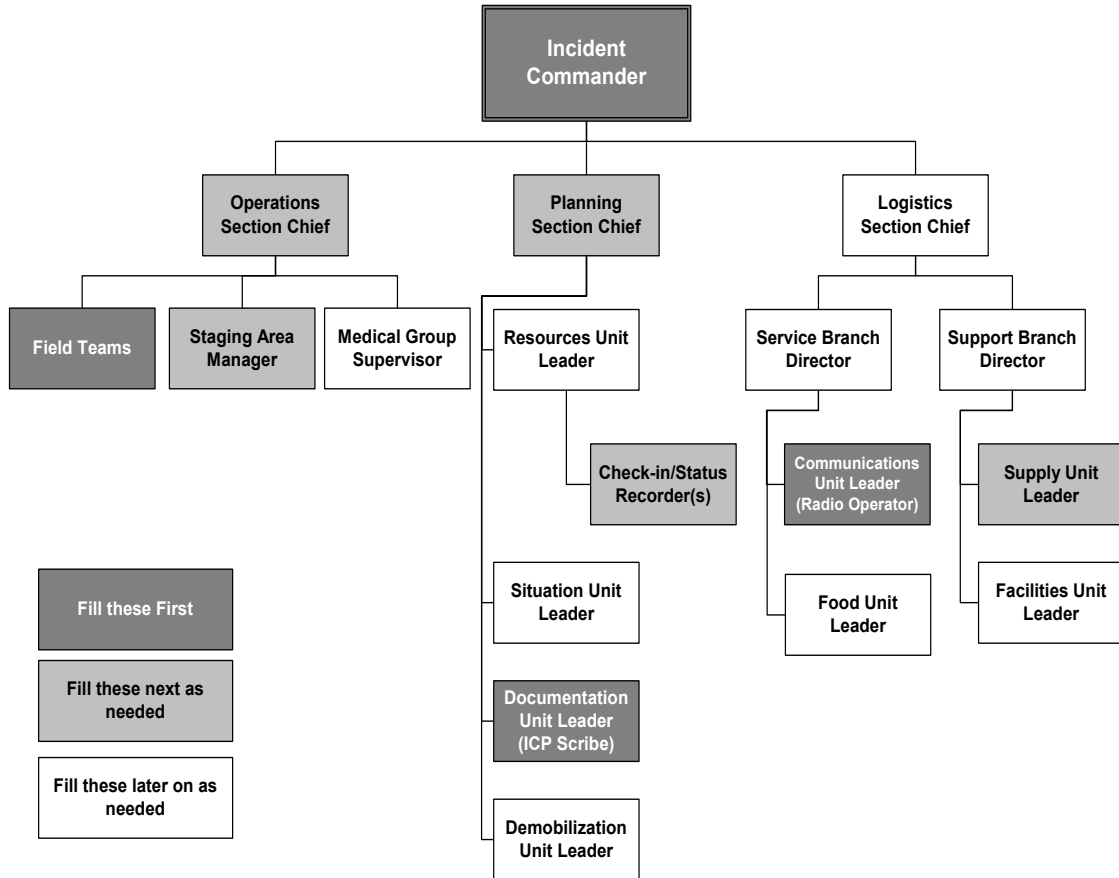


FOSTER CITY CERT ICP in a Box

**BINDER#2b
RADIO OPERATOR - Amateur**

**FIRST EDITION
22 AUGUST 2011**

CERT ICS ORGANIZATION



RADIO OPERATOR - HAM

You have an Amateur Radio License and pass messages to and from the ICP and participate as a station on the Foster City ARES/RACES radio nets.

- Ensure radios are in good working condition and on the proper channel (Channel Allocations are detailed on the ICS 205 on following page in this binder)
- Check-in with the Foster City ARES Net upon activation of the ICP.
- Properly identify yourself with your FCC ID and any assigned tactical callsign when checking in.
- Monitor the Foster City ARES Net.
- Transmit messages for external entities through the Foster City ARES/RACES Net.
- Write incoming formal messages on an ICS213 and give to intended recipient.
- Maintain a communications Log using the Unit/Activity Log (ICS Form 214) or Communication Log (ICS Form 309)
- If you receive an incoming EMERGENCY or PRIORITY message write it down and IMMEDIATELY give it to the IC.
- If you are told to send an EMERGENCY or PRIORITY message, send it IMMEDIATELY, before any other traffic.
- Plan for and acquire supplies needed to keep all radios operational

| Foster City CERT Communications Plan | | | | | |
|---|------------------|-----------|---------------------------------------|---------------|--------------------------|
| Comm. Plan ICS 205 | 1. Incident Name | | 2. Date/Time Prepared 12 June 2008 | | 3. Operational Period |
| Radio Type | Channel ID | Function | Chan-Code/Freq. | Assignment | Remarks |
| VHF - 2m | Echo 1 | Tactical | 147.570s | FC Net | EOC to CERT |
| VHF - 2m | Echo 2 | Resource | 146.565s | FC Net | Alternate Freq. |
| FRS/GMRS | Golf 1 | Primary | 1 - 1 | NBH1 | |
| FRS/GMRS | Golf 11 | Backup 1 | 6 - 1 | NBH1 | |
| FRS/GMRS | Golf 21 | Backup 2 | 15 - 1 | NBH1 | |
| FRS/GMRS | Golf 31 | Low power | 11 - 1 | NBH1 | |
| FRS/GMRS | Golf 2 | Primary | 2 - 2 | NBH2 | |
| FRS/GMRS | Golf 12 | Backup 1 | 4 - 2 | NBH2 | |
| FRS/GMRS | Golf 22 | Backup 2 | 5 - 2 | NBH2 | |
| FRS/GMRS | Golf 32 | Low power | 12 - 2 | NBH2 | |
| FRS/GMRS | Golf 3 | Primary | 3 - 3 | NBH3 | |
| FRS/GMRS | Golf 13 | Backup 1 | 7 - 3 | NBH3 | |
| FRS/GMRS | Golf 23 | Backup 2 | 19 - 3 | NBH3 | |
| FRS/GMRS | Golf 33 | Low power | 13 - 3 | NBH3 | |
| FRS/GMRS | Golf 4 | Primary | 4 - 4 | NBH4 | |
| FRS/GMRS | Golf 14 | Backup 1 | 2 - 4 | NBH4 | |
| FRS/GMRS | Golf 24 | Backup 2 | 17 - 4 | NBH4 | |
| FRS/GMRS | Golf 34 | Low power | 14 - 4 | NBH4 | |
| FRS/GMRS | Golf 5 | Primary | 5 - 5 | NBH5 | |
| FRS/GMRS | Golf 15 | Backup 1 | 7 - 5 | NBH5 | |
| FRS/GMRS | Golf 25 | Backup 2 | 3 - 5 | NBH5 | |
| FRS/GMRS | Golf 35 | Low power | 12 - 5 | NBH5 | |
| FRS/GMRS | Golf 6 | Primary | 6 - 6 | NBH6 | |
| FRS/GMRS | Golf 16 | Backup 1 | 1 - 6 | NBH6 | |
| FRS/GMRS | Golf 26 | Backup 2 | 16 - 6 | NBH6 | |
| FRS/GMRS | Golf 36 | Low power | 13 - 6 | NBH6 | |
| FRS/GMRS | Golf 7 | Primary | 7 - 7 | NBH7 | |
| FRS/GMRS | Golf 17 | Backup 1 | 5 - 7 | NBH7 | |
| FRS/GMRS | Golf 27 | Backup 2 | 3 - 7 | NBH7 | |
| FRS/GMRS | Golf 37 | Low power | 11 - 7 | NBH7 | |
| FRS/GMRS | Golf 8 | Primary | 18 - 8 | NBH8 | |
| FRS/GMRS | Golf 18 | Backup 1 | 4 - 8 | NBH8 | |
| FRS/GMRS | Golf 28 | Backup 2 | 15 - 8 | NBH8 | |
| FRS/GMRS | Golf 38 | Low power | 8 - 8 | NBH8 | |
| FRS/GMRS | Golf 9 | Primary | 19 - 9 | NBH9 | |
| FRS/GMRS | Golf 19 | Backup 1 | 2 - 9 | NBH9 | |
| FRS/GMRS | Golf 29 | Backup 2 | 17 - 9 | NBH9 | |
| FRS/GMRS | Golf 39 | Low power | 9 - 9 | NBH9 | |
| FRS/GMRS | Golf 10 | Tactical | 20 - 20 | By Assignment | |
| FRS/GMRS | Golf 20 | Tactical | 21 - 21 | By Assignment | |
| FRS/GMRS | Golf 30 | Monitor | 22 - 22 | Common | |

Portions © 2007-2011 Whiskey Whiskey Romeo. All Rights Reserved.

Radio Procedures & Aids

Tactical Callsigns

For neighborhood number <N>:

| POSITION/STATION | TACTICAL CALLSIGN |
|-------------------------|--------------------------|
| Incident Command Post | CERT <N> ICP |
| Incident Commander | CERT <N> COMMAND |
| Staging Area | CERT <N> STAGING |
| Field Team One | CERT <N> TEAM ONE |
| Division A | CERT <N> DIVISION ALPHA |

Note that on a neighborhood dedicated channel the CERT <N> prefix is optional but recommended for clarity.

Other:

| POSITION/STATION | TACTICAL CALLSIGN |
|------------------------------------|--------------------------|
| FC ARES/RACES Net Control Operator | FOSTER CITY NET CONTROL |

Radio Equipment Checklist

- Inspect batteries and radio for damage
- Turn on radio
- Check battery status indicator
- Set radio to the assigned channel
- Set CTCSS (not DCS)
- TURN OFF VOX
- Turn off any "GROUP" or Digital modes are disabled
- Turn off "Roger Beep" features.
- Consider locking the key pad.
- Conduct test transmission.
- Ensure that you are receiving properly.
- Set volume properly. Remember to turn up volume when in noisy environments. An earphone or bud may help eliminate the ambient noise but will prevent other team members from being able to monitor the radio.
- Check settings and remaining battery power periodically.
- Carry at least one extra set of batteries with you at all times.
- Do not keep radios in pockets or backpacks where they can be accidentally activated

Station/Team Check-in and check-out

- All stations and teams that are part of a radio net must check in when requested by the net control operator.
- No station or team can leave a net that they have checked into without permission from the net control operator.