



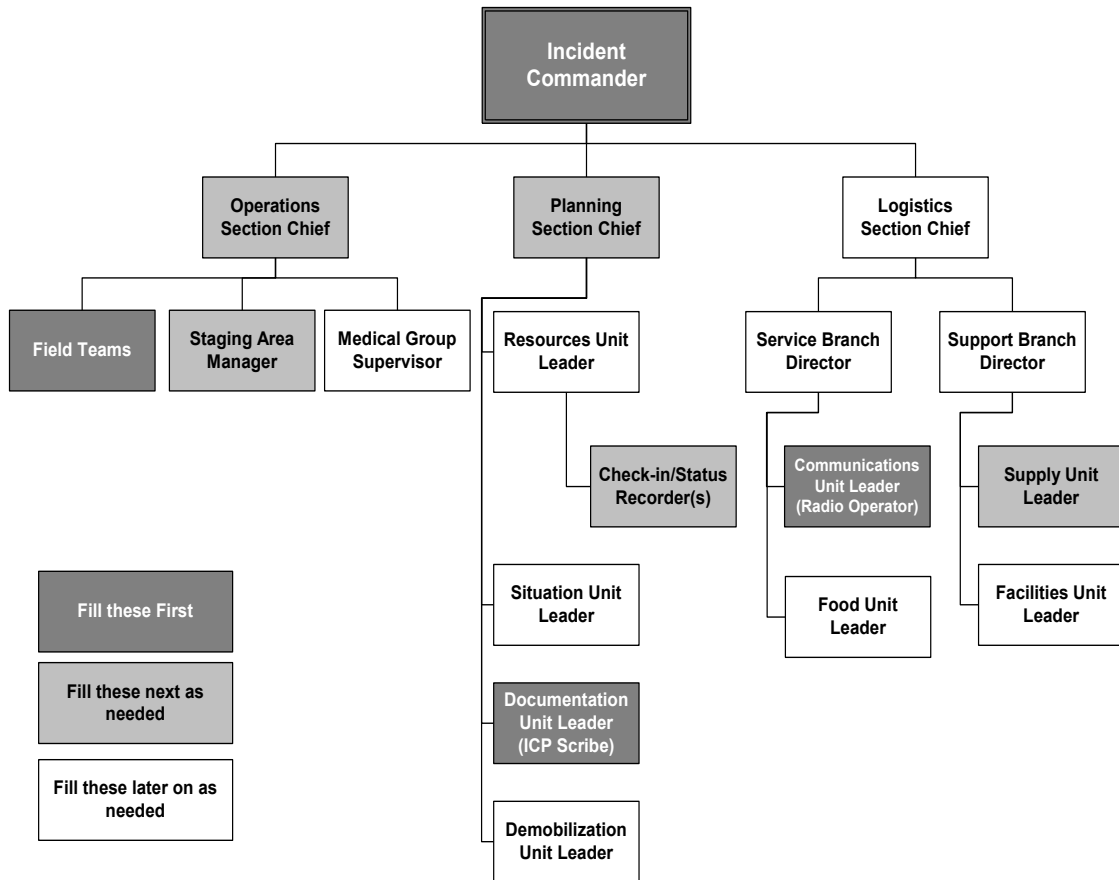
FOSTER CITY CERT ICP in a Box

BINDER#2a RADIO NET CONTROL OPERATOR - FRS

**FIRST EDITION
22 AUGUST 2011**

Portions © 2007-2011 Whiskey Whiskey Romeo. All Rights Reserved.

CERT ICS ORGANIZATION



RADIO NET CONTROL OPERATOR - FRS

You run the Neighborhood FRS Radio Net, pass messages to and from teams

- Ensure radios are in good working condition and on the proper channel (Channel Allocations are detailed on the ICS 205 on following page in this binder)
- Initiate and maintain a neighborhood radio network on FRS/GMRS (Net Control Scripts follow on page 7 of this binder)
- Pass messages to/from the ICP and Field Teams
- Track last contact information for each station on the net.
- Conduct periodic roll calls
- Write incoming formal messages on an ICS213 and give to intended recipient.
- Maintain a Communications Log using the Unit/Activity Log (ICS Form 214) or Communications Log (ICS Form 309)
- If you receive an incoming EMERGENCY or PRIORITY message write it down and IMMEDIATELY give it to the IC.
- If you are told to send an EMERGENCY or PRIORITY message, send it IMMEDIATELY, before any other traffic.
- Plan for and acquire supplies (batteries) needed to keep all radios operational

Foster City CERT Communications Plan					
Comm. Plan ICS 205	1. Incident Name		2. Date/Time Prepared 12 June 2008		3. Operational Period
Radio Type	Channel ID	Function	Chan-Code/Freq.	Assignment	Remarks
VHF - 2m	Echo 1	Tactical	147.570s	FC Net	EOC to CERT
VHF - 2m	Echo 2	Resource	146.565s	FC Net	Alternate Freq.
FRS/GMRS	Golf 1	Primary	1 - 1	NBH1	
FRS/GMRS	Golf 11	Backup 1	6 - 1	NBH1	
FRS/GMRS	Golf 21	Backup 2	15 - 1	NBH1	
FRS/GMRS	Golf 31	Low power	11 - 1	NBH1	
FRS/GMRS	Golf 2	Primary	2 - 2	NBH2	
FRS/GMRS	Golf 12	Backup 1	4 - 2	NBH2	
FRS/GMRS	Golf 22	Backup 2	5 - 2	NBH2	
FRS/GMRS	Golf 32	Low power	12 - 2	NBH2	
FRS/GMRS	Golf 3	Primary	3 - 3	NBH3	
FRS/GMRS	Golf 13	Backup 1	7 - 3	NBH3	
FRS/GMRS	Golf 23	Backup 2	19 - 3	NBH3	
FRS/GMRS	Golf 33	Low power	13 - 3	NBH3	
FRS/GMRS	Golf 4	Primary	4 - 4	NBH4	
FRS/GMRS	Golf 14	Backup 1	2 - 4	NBH4	
FRS/GMRS	Golf 24	Backup 2	17 - 4	NBH4	
FRS/GMRS	Golf 34	Low power	14 - 4	NBH4	
FRS/GMRS	Golf 5	Primary	5 - 5	NBH5	
FRS/GMRS	Golf 15	Backup 1	7 - 5	NBH5	
FRS/GMRS	Golf 25	Backup 2	3 - 5	NBH5	
FRS/GMRS	Golf 35	Low power	12 - 5	NBH5	
FRS/GMRS	Golf 6	Primary	6 - 6	NBH6	
FRS/GMRS	Golf 16	Backup 1	1 - 6	NBH6	
FRS/GMRS	Golf 26	Backup 2	16 - 6	NBH6	
FRS/GMRS	Golf 36	Low power	13 - 6	NBH6	
FRS/GMRS	Golf 7	Primary	7 - 7	NBH7	
FRS/GMRS	Golf 17	Backup 1	5 - 7	NBH7	
FRS/GMRS	Golf 27	Backup 2	3 - 7	NBH7	
FRS/GMRS	Golf 37	Low power	11 - 7	NBH7	
FRS/GMRS	Golf 8	Primary	18 - 8	NBH8	
FRS/GMRS	Golf 18	Backup 1	4 - 8	NBH8	
FRS/GMRS	Golf 28	Backup 2	15 - 8	NBH8	
FRS/GMRS	Golf 38	Low power	8 - 8	NBH8	
FRS/GMRS	Golf 9	Primary	19 - 9	NBH9	
FRS/GMRS	Golf 19	Backup 1	2 - 9	NBH9	
FRS/GMRS	Golf 29	Backup 2	17 - 9	NBH9	
FRS/GMRS	Golf 39	Low power	9 - 9	NBH9	
FRS/GMRS	Golf 10	Tactical	20 - 20	By Assignment	
FRS/GMRS	Golf 20	Tactical	21 - 21	By Assignment	
FRS/GMRS	Golf 30	Monitor	22 - 22	Common	

Radio Procedures & Aids

Tactical Callsigns

For Neighborhood Number <N>:

POSITION/STATION	TACTICAL CALLSIGN
Incident Command Post	CERT <N> ICP
Incident Commander	CERT <N> COMMAND
Staging Area	CERT <N> STAGING
Field Team One	CERT <N> TEAM ONE
Division A	CERT <N> DIVISION ALPHA

Note that on a neighborhood dedicated channel the CERT <N> prefix is optional but recommended for clarity.

Other:

POSITION/STATION	TACTICAL CALLSIGN
FC ARES/RACES Net Control Operator	FOSTER CITY NET CONTROL

Radio Equipment Checklist

- Inspect batteries and radio for damage
- Turn on radio
- Check battery status indicator
- Set radio to the assigned channel
- Set CTCSS (not DCS)
- TURN OFF VOX
- Turn off any "GROUP" or Digital modes are disabled
- Turn off "Roger Beep" features.
- Consider locking the key pad.
- Conduct test transmission.
- Ensure that you are receiving properly.
- Set volume properly. Remember to turn up volume when in noisy environments. An earphone or bud may help eliminate the ambient noise but will prevent other team members from being able to monitor the radio.
- Check settings and remaining battery power periodically.
- Carry at least one extra set of batteries with you at all times.
- Do not keep radios in pockets or backpacks where they can be accidentally activated

Station/Team Check-in and check-out

- All stations and teams that are part of a radio net must check in by radio every 20 minutes unless otherwise instructed.
- No station or team can leave a net that they have checked into without permission from the net control operator.

**SCRIPT FOR OPENING THE NEIGHBORHOOD NET IN
RESPONSE TO ACTIVATION.****ALL STATIONS – ALL STATIONS – ALL STATIONS**

THIS IS FOSTER CITY CERT NEIGHBORHOOD <give your neighborhood number> **NET CONTROL FOR THE NEIGHBORHOOD FRS/GMRS RADIO NET OPENING THE NET ON** <date> **AT** <time>. **WE ARE OPERATING FROM** <fill in location>. **THIS NET IS IN SUPPORT OF ACTIVITIES RELATED TO CERT ACTIVATION IN THE CITY OF FOSTER CITY. THIS IS A DIRECTED NET. STATIONS NOT PARTICIPATING ARE REQUESTED TO STAND BY UNTIL THIS NET IS COMPLETED. THIS NET WILL REMAIN OPERATIONAL FOR THE DURATION OF CERT ACTIVATION IN FOSTER CITY. STATIONS WITH EMERGENCY OR PRIORITY TRAFFIC MAY BREAK IN AT ANY TIME.**

<pause>

**IS THERE ANY EMERGENCY OR PRIORITY TRAFFIC?
PLEASE COME NOW.**

<pause>

NOTHING HEARD <If nothing is heard. If there is traffic acknowledge and handle as appropriate. If there is a formal activation message it should be broadcast now. Otherwise if activation has been confirmed, the following message should be broadcast>

ALL STATIONS – ALL STATIONS – ALL STATIONS

THE CITY OF FOSTER CITY HAS ACTIVATED COMMUNITY EMERGENCY RESPONSE TEAMS AS OF <date and time> . **THIS INFORMATION WAS RECEIVED VIA** <give source, SMCAAlert, HAM Radio, etc> **IF ABLE, ALL ACTIVE CERT MEMEBERS ARE REQUESTED TO REPORT TO THEIR DESIGNATED NEIGHBORHOOD ASSEMBLY POINTS FOR FURTHER INSTRUCTIONS. THIS IS NOT A DRILL.**

<repeat message>

ANY STATION WISHING TO CHECK IN PLEASE COME NOW.

<Proceed with the net, taking check-in or whatever the operation of the net requires.>

SCRIPT TO BE USED FOR PERIODIC IDENTIFICATION OF THE NET IN RESPONSE TO AN ACTIVATION

ALL STATIONS – ALL STATIONS – ALL STATIONS

THIS IS FOSTER CITY CERT NEIGHBORHOOD <give your neighborhood number> **NET CONTROL FOR THE NEIGHBORHOOD FRS/GMRS RADIO NET. THIS NET IS IN SUPPORT OF ACTIVITIES RELATED TO CERT ACTIVATION IN THE CITY OF FOSTER CITY. THIS IS A DIRECTED NET. STATIONS NOT PARTICIPATING ARE REQUESTED TO STAND BY UNTIL THIS NET IS COMPLETED. THIS NET WILL REMAIN OPERATIONAL FOR THE DURATION OF CERT ACTIVATION IN FOSTER CITY. STATIONS WITH EMERGENCY OR PRIORITY TRAFFIC MAY BREAK IN AT ANY TIME.**

<pause>

<If there is a formal activation message it should be broadcast now. Otherwise if activation has been confirmed, the following message should be broadcast>

**ALL STATIONS – ALL STATIONS – ALL STATIONS
PRIORITY MESSAGE FOLLOWS**

<pause>

BEGIN MESSAGE

THE CITY OF FOSTER CITY HAS ACTIVATED COMMUNITY EMERGENCY RESPONSE TEAMS AS OF <date and time> . THIS INFORMATION WAS RECEIVED VIA <give source, SMCAAlert, HAM Radio, etc> IF ABLE, ALL ACTIVE CERT MEMEBERS ARE REQUESTED TO REPORT TO THEIR DESIGNATED NEIGHBORHOOD ASSEMBLY POINTS FOR FURTHER INSTRUCTIONS. THIS IS NOT A DRILL.

END OF MESSAGE

<repeat message>

ANY STATION WISHING TO CHECK IN PLEASE COME NOW.

<Proceed with the net, taking check-in or whatever the operation of the net requires.>

SCRIPT TO BE USED FOR DEACTIVATING AFTER ACTIVATION.**ALL STATIONS – ALL STATIONS – ALL STATIONS**

THIS IS FOSTER CITY CERT NEIGHBORHOOD <give your neighborhood number> **NET CONTROL FOR THE NEIGHBORHOOD FRS/GMRS RADIO NET. THIS NET IS IN SUPPORT OF ACTIVITIES RELATED TO CERT ACTIVATION IN THE CITY OF FOSTER CITY. THIS IS A DIRECTED NET. STATIONS NOT PARTICIPATING ARE REQUESTED TO STAND BY UNTIL THIS NET IS COMPLETED.**

<pause>

<If there is a formal deactivation message it should be broadcast now. Otherwise if deactivation has been confirmed, the following message should be broadcast>

ALL STATIONS – ALL STATIONS – ALL STATIONS**PRIORITY MESSAGE FOLLOWS**

<pause>

BEGIN MESSAGE

THE CITY OF FOSTER CITY HAS DEACTIVATED COMMUNITY EMERGENCY RESPONSE TEAMS AS OF <date and time> . **THIS INFORMATION WAS RECEIVED VIA** <give source, SMCAAlert, HAM Radio, etc> **ALL CERT TEAMS IN THE FIELD SHOULD NOW REPORT BACK TO THEIR ICP FOR DEMOBILIZATION. END OF MESSAGE**

<repeat message>

ALL TEAMS PLEASE ACKNOWLEDGE RECEIPT OF THIS MESSAGE.

< Proceed taking acknowledgements or whatever the operation of the net requires.>

<When all field teams have returned to the ICP and checked out of the net, net control should close the net.

SCRIPT TO BE USED FOR CLOSING AFTER DEACTIVATION.

**ALL STATIONS – ALL STATIONS – ALL STATIONS
THIS IS FOSTER CITY CERT NEIGHBORHOOD <give your
neighborhood number> NET CONTROL FOR THE
NEIGHBORHOOD FRS/GMRS RADIO NET. THIS NET HAS BEEN
OPERATED IN SUPPORT OF ACTIVITIES RELATED TO CERT
ACTIVATION IN THE CITY OF FOSTER CITY. CERT HAS BEEN
DEACTIVATED, ALL FIELD TEAMS SHOULD HAVE BEEN
RECALLED AND WE ARE NOW PREPARING TO CLOSE THE
NET.**

**IS THERE ANY REMAINING TRAFFIC?
<pause>**

**NOTHING HEARD. <If nothing is heard. If there is traffic
acknowledge and handle as appropriate>**

**THIS IS FOSTER CITY CERT NEIGHBORHOOD <give your
neighborhood number> NET CONTROL FOR THE
NEIGHBORHOOD FRS/GMRS RADIO NET NOW CLOSING THE
NET ON <date> AT <time>. THIS CHANNEL IS NOW AVAILABLE
FOR NORMAL USE.**